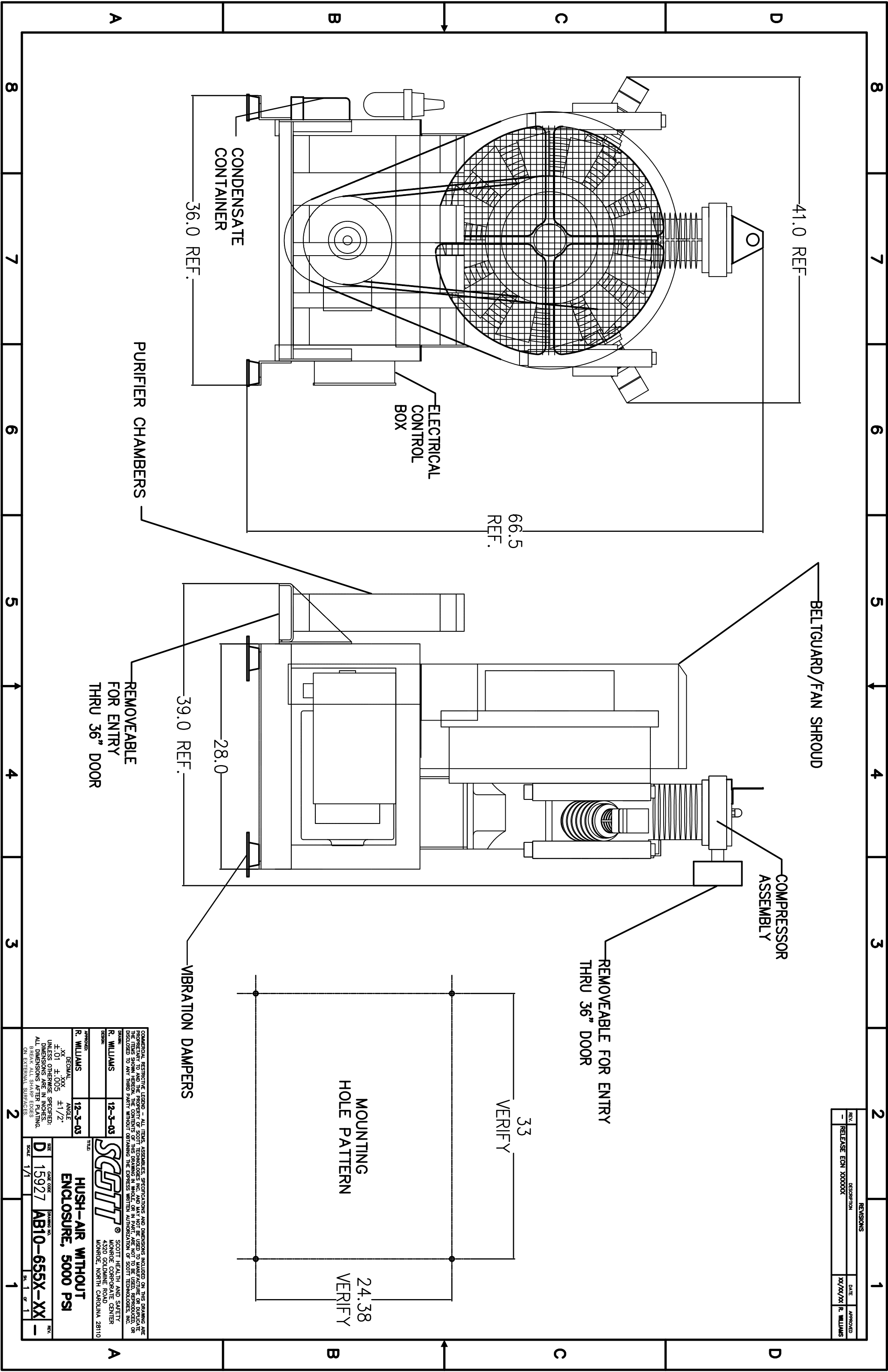


REVISIONS		
REV.	DESCRIPTION	DATE
-	RELEASE ECON XXXXXXX	XX/XX/XX
		R. WILLIAMS



COMMERCIAL RESTRICTIVE LEGEND - ALL ITEMS, ASSEMBLIES, SPECIFICATIONS AND DIMENSIONS INCLUDED ON THIS DRAWING ARE THE PROPERTY OF SCOTT TECHNOLOGIES INC. AND MAY NOT BE USED TO MANUFACTURE OR REPRODUCE OR DISSEMINATE THE CONTENTS OF THIS DRAWING IN WHOLE OR IN PART, OR IN ANY MANNER, WITHOUT THE EXPRESS WRITTEN AUTHORIZATION OF SCOTT TECHNOLOGIES, INC.

DESIGNER: R. WILLIAMS
 DATE: 12-3-03
 APPROVED: R. WILLIAMS
 DATE: 12-3-03

SCOTT
 SCOTT HEALTH AND SAFETY
 MONROE CORPORATE CENTER
 4320 GOLDMINE ROAD
 MONROE, NORTH CAROLINA 28110

TITLE: HUSH-AIR WITHOUT ENCLOSURE, 5000 PSI

SCALE: 1/1

DECIMAL ANGLES
 .01 ±.005 ±1/2°
 UNLESS OTHERWISE SPECIFIED, DIMENSIONS ARE IN INCHES. ALL DIMENSIONS AFTER PLATING, BREAK ALL SHARP EDGES ON EXTERNAL SURFACES.